

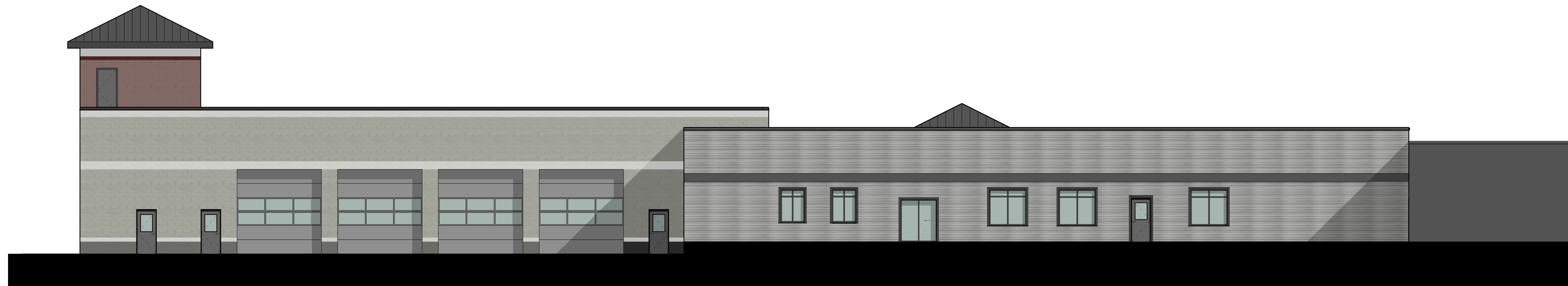
All rights reserved. No part of this document may be reproduced or utilized in any form, without prior written authorization by Bivens + Associates Architects, P.L.L.C.



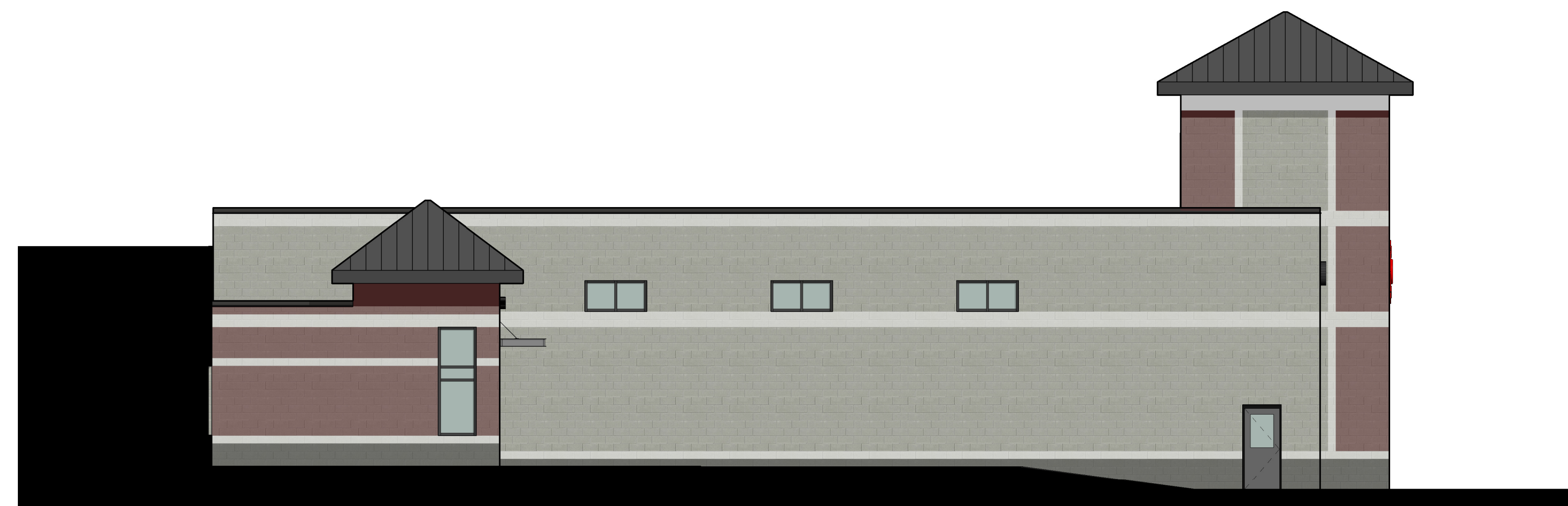
1 SOUTH ELEVATION DESIGN
A201A 1/8" = 1'-0"



2 EAST ELEVATION DESIGN
A201A 1/8" = 1'-0"



3 NORTH ELEVATION DESIGN
A201A 1/8" = 1'-0"



- CMU-1
 BARNES & CONE HI-R H
 COLOR: LIMESTONE
 TYPE: SPLIT FACE CMU
 LOCATION: WALL FIELD
- CMU-2
 BARNES & CONE HI-R H
 COLOR: LATTE
 TYPE: DECRO FACE CMU
 LOCATION: WALL ACCENT
- CMU-3
 BARNES & CONE HI-R H
 COLOR: NUTMEG
 TYPE: SPLIT FACE CMU
 LOCATION: WALL FEATURES
- CMU-4
 BARNES & CONE HI-R H
 COLOR: SHADOW
 TYPE: SPLIT FACE CMU
 LOCATION: WALL WATER COURSE

4 WEST ELEVATION DESIGN
A201A 1/8" = 1'-0"

BIVENS ARCHITECTS

301 Plainfield Road, Suite 270
Syracuse, New York 13221
(315) 703-0987 fax
www.bivensarchitects.com

CIVIL / LANDSCAPE
NAPIERALA CONSULTING PROFESSIONAL ENGINEERS
110 FAYETTE STREET
MANLIUS, NEW YORK 13104
TEL: (315) 682-0080

STRUCTURAL
PALUCCI ENGINEERING
225 GREENFIELD PARKWAY
LIVERPOOL, NEW YORK 13088
TEL: (315) 472-1284

MECHANICAL, PLUMBING & ELECTRICAL
CAPITAL CONSULTANTS, INC., PC
301 PLAINFIELD ROAD, SUITE 270
SYRACUSE, NEW YORK 13212
TEL: (315) 360-6382

ISSUED AND REVISION NOTIFICATION

No.	Description	Date

Ⓜ - Symbol Indicates Revision Issued

SEAL



CITY OF AUBURN
 NEW PUBLIC SAFETY BUILDING
 31 SEMINARY STREET
 AUBURN, NEW YORK 13021



PROJECT No: 1274.001
DRAWING TITLE: ELEVATIONS

SCALE: As noted

A201A

MAY 2020

DESIGN DEVELOPMENT, 05/18/20

C:\Users\Zasper\Documents\Auburn Fire Department_DD_zasper.rvt
6/5/2020 11:35:50 AM