

## LPEC VISION STATEMENT:

*"A premier destination that reflects the pride of Fond du Lac yesterday, today, and tomorrow, and serves as a gathering place that provides a myriad of opportunities to improve the quality of life of visitors both locally and beyond."*

# The Vision Lakeside Park



**Supporters of**  
LAKESIDE PARK EXPLORATORY COMMITTEE







# Economic Development Lakeside Park







# Accomplishments & Beyond

# Lakeside Park



**Supporters of**  
LAKESIDE PARK EXPLORATORY COMMITTEE



**EXCEL**  
ARCHITECTS • ENGINEERS • SURVEYORS





# Site Considerations

# Lakeside Park







# Site Selection & Utilization

Lakeside Park



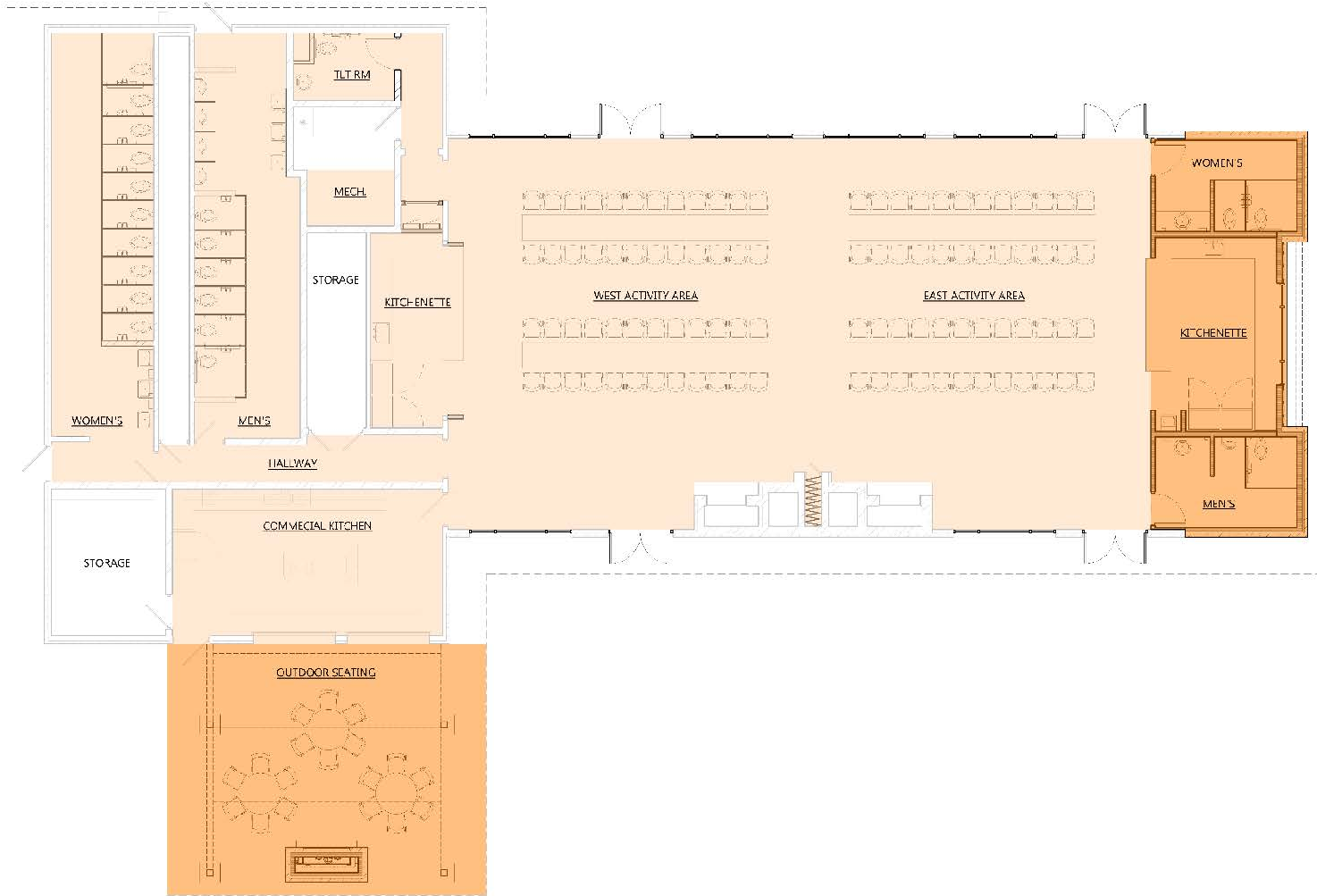




# Site Selection & Utilization

# Lakeside Park





# Revitalizing the Pavilion

# Lakeside Park







# Revitalizing the Pavilion

Lakeside Park







# Revitalizing the Pavilion

# Lakeside Park







# Revitalizing the Pavilion

# Lakeside Park







# Revitalizing the Pavilion

# Lakeside Park







# Revitalizing the Pavilion

# Lakeside Park







# Revitalizing the Pavilion

# Lakeside Park



**Supporters of**  
LAKESIDE PARK EXPLORATORY COMMITTEE



ARCHITECTS - ENGINEERS - SURVEYORS





# Revitalizing the Pavilion

# Lakeside Park





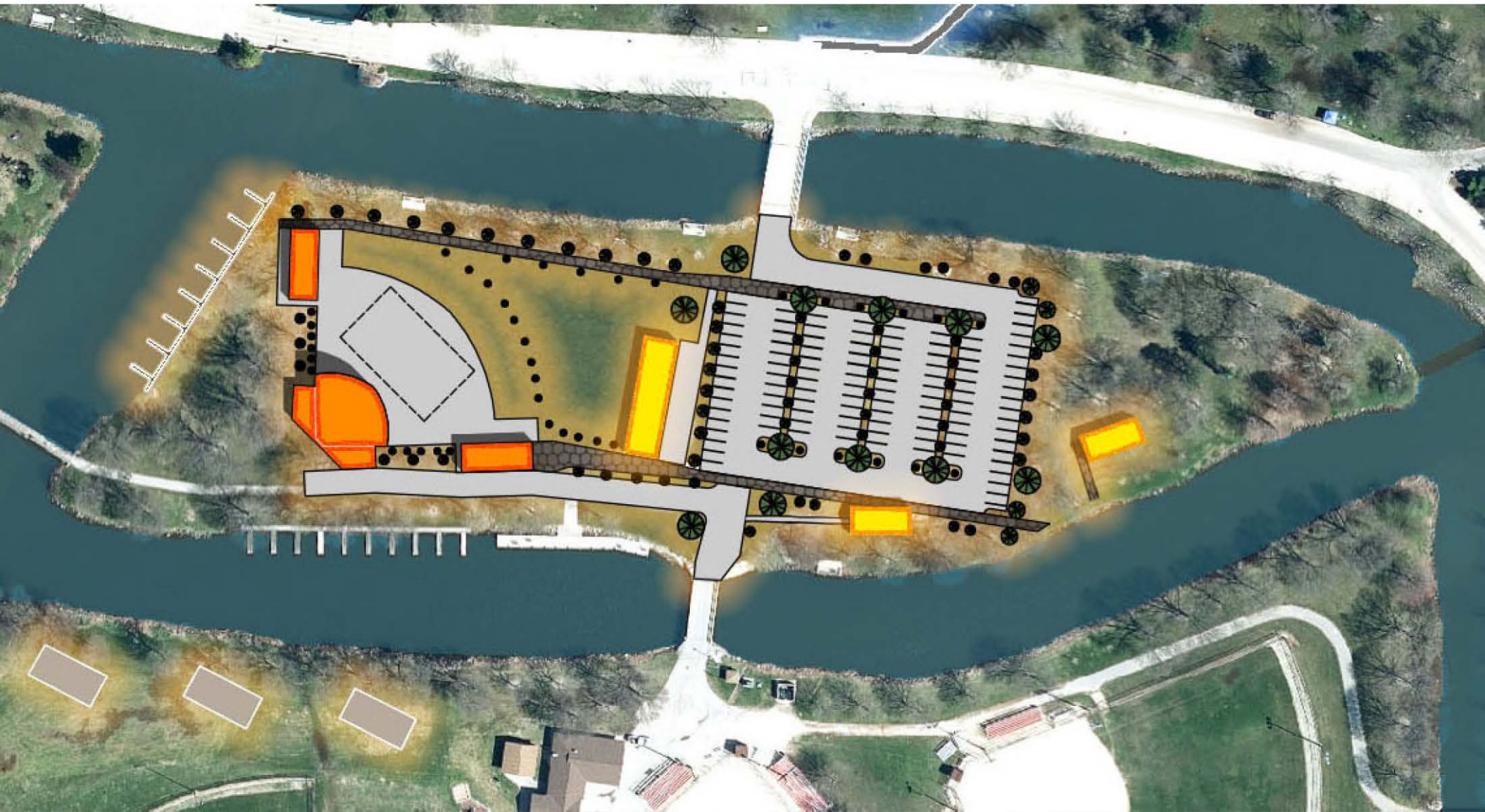


# Site Selection & Utilization

Lakeside Park







# Site Selection & Utilization

# Lakeside Park







# Perspective Lakeside Park



**Supporters of**  
LAKESIDE PARK EXPLORATORY COMMITTEE



ARCHITECTS • ENGINEERS • SURVEYORS





# Perspective Lakeside Park



**Supporters of**  
LAKESIDE PARK EXPLORATORY COMMITTEE







# Perspective Lakeside Park



**Supporters of**  
LAKESIDE PARK EXPLORATORY COMMITTEE







# Perspective Lakeside Park



**Supporters of**  
LAKESIDE PARK EXPLORATORY COMMITTEE







# Perspective Lakeside Park



**Supporters of**  
LAKESIDE PARK EXPLORATORY COMMITTEE







# Site Selection & Utilization

Lakeside Park







# Site Selection & Utilization

Lakeside Park







# Perspective Lakeside Park



**Supporters of**  
LAKESIDE PARK EXPLORATORY COMMITTEE







# Perspective Lakeside Park



**Supporters of**  
LAKESIDE PARK EXPLORATORY COMMITTEE







# Perspective Lakeside Park



**Supporters of**  
LAKESIDE PARK EXPLORATORY COMMITTEE







# Perspective Lakeside Park



**Supporters of**  
LAKESIDE PARK EXPLORATORY COMMITTEE





**LEGEND**

 **Previously Started / Accomplished**

- |                                 |                         |  |
|---------------------------------|-------------------------|--|
| 1 Walking and Biking Paths      | 7 Marketing             | 16 Splash Pad / Ice Skating Rink                     |
| 2 Concerts and Festivals        | 8 Children's Activities | 17 Nature Center and Historical Building             |
| 3 Public Docks                  | 9 Boardwalk             | 18 Four-Season Restrooms                             |
| 4 Multi-Functional Amphitheater | 10 Marsh Walk           | 19 Extend Wi-fi                                      |
| 5 Food Options                  | 11 Rentals              | 20 Landscaping                                       |
| 6 Public Beach                  | 12 Activities on lake   | 21 Plaques, Historical Markers, a Sense of Place     |
|                                 | 13 Restaurant           | 22 Upgrade Existing Pavilions, Shelters and Restroom |
|                                 | 14 People Piers         | 23 Community Outreach                                |
|                                 | 15 Sports Facility      | 24 Water Sport Classes                               |
|                                 |                         | 25 Public Art  |
|                                 |                         | 26 Transportation                                    |
|                                 |                         | 27 Snowshoeing                                       |

# LPEC - 27 Recommendations

# Lakeside Park



**Supporters of**

LAKESIDE PARK EXPLORATORY COMMITTEE



**EXCEL**

ARCHITECTS • ENGINEERS • SURVEYORS



**LEGEND**

 **Previously Started / Accomplished**

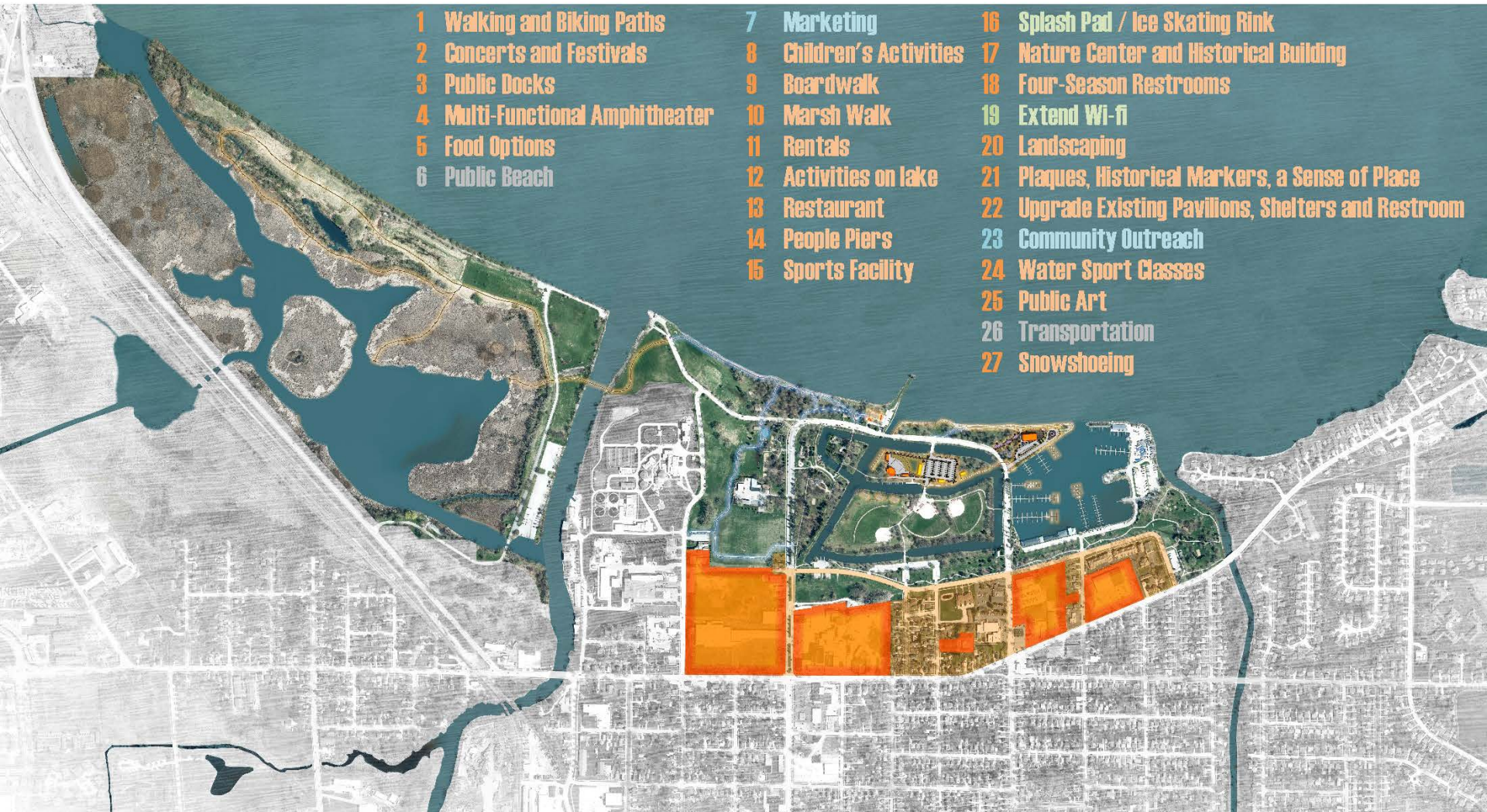
 **Addressed in this Master Plan**

 **Intangible**

- 1 Walking and Biking Paths
- 2 Concerts and Festivals
- 3 Public Docks
- 4 Multi-Functional Amphitheater
- 5 Food Options
- 6 Public Beach

- 7 Marketing
- 8 Children's Activities
- 9 Boardwalk
- 10 Marsh Walk
- 11 Rentals
- 12 Activities on lake
- 13 Restaurant
- 14 People Piers
- 15 Sports Facility

- 16 Splash Pad / Ice Skating Rink
- 17 Nature Center and Historical Building
- 18 Four-Season Restrooms
- 19 Extend Wi-Fi
- 20 Landscaping
- 21 Plaques, Historical Markers, a Sense of Place
- 22 Upgrade Existing Pavilions, Shelters and Restroom
- 23 Community Outreach
- 24 Water Sport Classes
- 25 Public Art
- 26 Transportation
- 27 Snowshoeing



# LPEC – 27 Recommendations

Questions/Comments: [lakesidepark2020@gmail.com](mailto:lakesidepark2020@gmail.com)



**Supporters of**  
LAKESIDE PARK EXPLORATORY COMMITTEE

